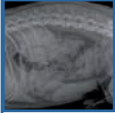


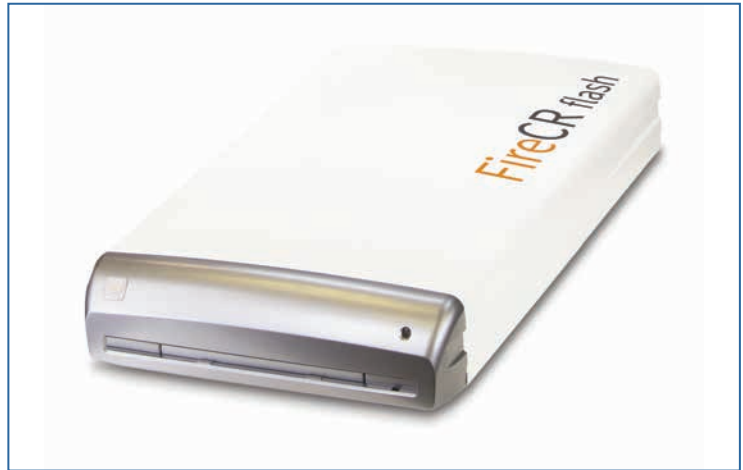
FireCR Flash

Automatic Digital X-Ray System



The automatic veterinary CR solution !

- ▷ **FireCR Flash 30:** Up to 30 plates/hour
- ▷ **FireCR Flash 50:** Up to 50 plates/hour
- ▷ **FireCR Flash 70:** Up to 70 plates/hour



- High-definition image DICOM format
- High throughput - up to 70 plates per hour (depending on the model)
- No bending of imaging plate
- Ultra-light and compact, table-top, wall-mounted or portable system
- Field upgradeable to protect technology investments
- Low noise during operation
- Fanless system prevents dust contamination
- Norberg angle, Cobb angle measurements and Vertebral Heart Score
- Wall mount available (option) for minimum space loss

Profitable from 2 images per week !

High Throughput

Capable of reading up to 70 imaging plates per hour, **FireCR Flash** veterinary readers deliver high quality images.

Compact and lightweight

Simply set on a desktop, mounted on a wall or moved directly to the animal, **FireCR Flash** veterinary system is capable of efficiently handling the everyday needs of professionals in veterinary clinics of any size.

Strong and robust

A specially designed metal plate «carries» the imaging plate through the system. **The imaging plate is never bent or rolled and nothing touches it during the reading process.** This avoids any risk of damage and prolongs the life of valuable imaging plates.

Upgradability

Customers invest in the scanner that meets and budgets, and then scale up as their imaging volume increases.



FireCR Flash

Key specifications:

Throughput:

- Up to 70 plates/hour (35*43 cm)

Plates size:

- 1 plate and 1 cassette 35*43 cm
- 1 plate and 1 cassette 24*30 cm

Resolution:

- 16 bits/pixel, 65 000 graytones
- 100µm or 200µm

Dimensions (H x W x D):

- 795 x 444 x 134 mm

Weight:

- 21.5 kg

Software :

- DICOM 3.0
- Embedded viewer
- Extended fonctionnality : image stitching module and additional measurement tools

Options :

- DICOM print
- CD burner
- Dental Imaging Plate : 0 (22x31 mm), 1 (24x40 mm), 2 (31x41mm), 4c (48x54 mm) and 4 (57x76 mm) sizes
- Computer
- Wall mount

Computer workstation minimum requirements :

- Intel Core Duo/Core 2 processor
- Min. 80 Gigabytes hard disk, 2 Gigabytes RAM
- Windows 7 (32-bit & 64-bit)
- NetCard (100 MBit), CD/DVD reader, 2 USB 2.0 ports
- Monitor : 1 280 x 900 pixels, DVI interface



FireCR Flash allows installation in veterinary clinics with limited space.

