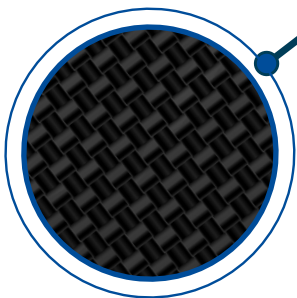


# CarbonTech V2 / Heating Mat by Mano Médical

Top-grade comfort and safety for the patient

EFFICIENT  
RELIABLE  
SAFE



# Why use the CarbonTech V2 heating mat ?



Carbon Tech is a warming device designed to prevent hypothermia and developed specifically to be used by veterinarians.\*

## Prevention

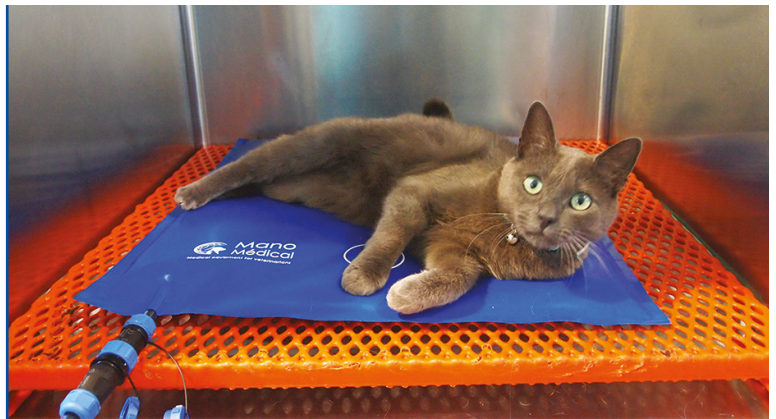
Maintaining body temperature is very important in the peri and post surgery period. The inability of an anaesthetised patient to maintain its body temperature will lead to hypothermia.

Consequences of hypothermia can include:

- ▶ Slower recovery from anaesthesia
- ▶ Risk of shock and poor blood circulation
- ▶ Delayed wound healing
- ▶ Increased risk of anaesthetic death

Maintaining a patient's body temperature is also important during simple procedures such as dental scaling.

The smaller the animal, the greater the risk of hypothermia. Thus, monitoring temperature is very important for rodents and birds.



## Curative

Hypothermia associated with shock must be treated slowly and systematically. It is important to maintain the body temperature as close as possible to the patients normal temperature (38°C / 100°F for cats and dogs). The heating mat enables gentle warming of the patient while bringing to the minimum the risk of burns.

The use of Carbon Tech V2 during anaesthesia or recovery to maintain patient temperature is simple and safe.



## Two sizes available:

Surgical table model: 52 x 112 cm (+/- 1 cm) - Operation : 60W - 24V  
Cage model: 52 x 62 cm (+/- 1 cm) - Operation: 30W - 24V



WARRANTY  
**5 YEARS**  
AGAINST  
SCRATCHES  
AND BITES

\*The CarbonTech heating mat is designed and validated for usage on dogs and cats. This warming device can be used for other animal species under the sole responsibility of the user. In this case, a special attention must be paid to the respect of the usage and safety instructions listed in the manual, especially if the metabolism or the body temperature of the species are significantly different from those of dogs and cats.

# Optimal patient care



## Increased safety with integrated regulation device

CarbonTech V2 is equipped with a **temperature probe and a high accuracy limiter**, to ensure that the contact temperature does not exceed the safety limits (42 °C - 107.6 °F)

Extra flat, Carbon Tech V2 carbon fabric does not store heat, **bringing the risk of burns to a minimum.**

For higher safety, the power is automatically turned off after 12 hours of use.



## Long-life and high efficiency

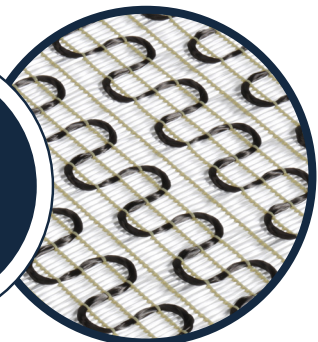
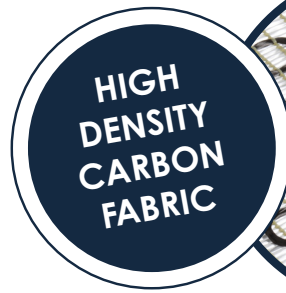
CarbonTech V2 reaches its regulation temperature **within 5 minutes only.**

CarbonTech V2 is designed to maintain the temperature necessary for warming the animal during long periods.

## Carbon Tech technology

Carbon Tech V2 incorporates a high density carbon fabric, specially designed for even heat distribution.

The soft yet resistant texture of the mat provides the patient with **maximum comfort.**



## Practical, robust and hygienic

The fastening system attaches the power block of the mat under the surgery table **to secure the work environment.**

The protective coating of Carbon Tech V2 provides maximum resistance to animal scratching and biting and is totally waterproof.

CarbonTech V2 can be cleaned easily with water and soap or standard veterinary detergent. Cleaning is facilitated by its disconnectable power cable.



## Carbon Tech V2 advantages

- ▶ The increased power results in faster heating
- ▶ Safe temperature regulation (integrated sensor)
- ▶ Safety shutdown after 12 hours of heating



22 rue Charles de Gaulle  
22100 Lanvallay - France  
Tel. +33 (0)2 96 85 86 76

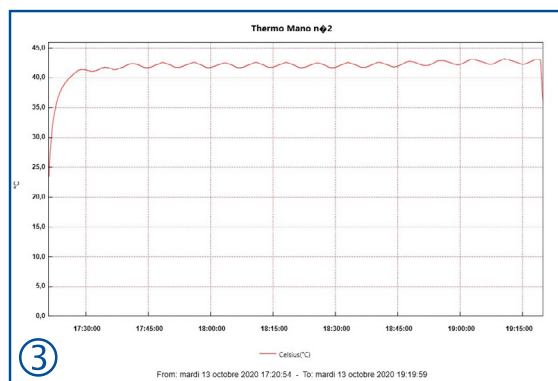
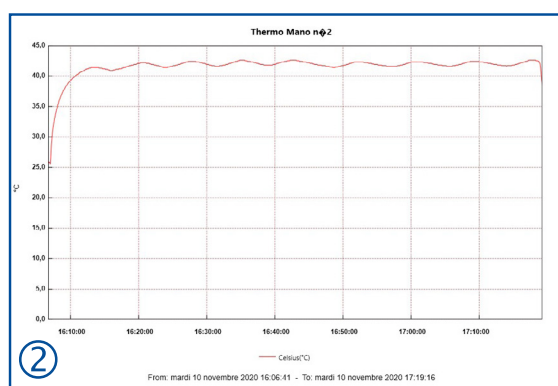
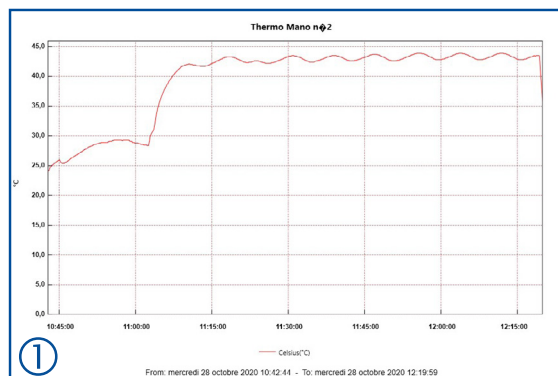
[export@manomedical.com](mailto:export@manomedical.com)  
[www.manomedical.com](http://www.manomedical.com)



# Technical specifications



- ▶ Integrated probe with temperature sensor
- ▶ Integrated temperature limiter (107.6°F - 42°C)
- ▶ 3 power levels (50%, 80% and 100%)
- ▶ Automatic shut-down after 12 hours of heating
- ▶ Disconnectable power block
- ▶ Universal power supply from 100 to 240V
- ▶ 24V DC operation
- ▶ High density carbon fabric
- ▶ Soft, resistant, easy-to-maintain coating



## Clinical results

Clinical tests have shown that use of the temperature limiter makes it possible to optimize heating, helping to guard against hypothermia.

- ① 4 kg Cat - intervention time: 1h40  
Temperature before surgery: 38.4°C  
Temperature at the end of the surgery: 38.1°C
- ② 9 kg Poodle - intervention time: 1h10  
Temperature before surgery: 37.8°C  
Temperature at the end of the surgery: 37.7°C
- ③ 40 kg Labrador - intervention time: 2h00  
Temperature before surgery: 38.7°C  
Temperature at the end of the surgery: 38.2°C



22 rue Charles de Gaulle  
22100 Lanvallay - France  
Tel. +33 (0)2 96 85 86 76

[export@manomedical.com](mailto:export@manomedical.com)

[www.manomedical.com](http://www.manomedical.com)