

Seal&Cut MV1.

THE VETERINARY VESSEL SEALING!



VESSEL SEALING
+ MONOPOLAR
AND BIPOLAR
ELECTROSURGERY
ALL-IN-ONE





A 3-in-1 electro-surgery unit

- ✓ Monopolar cutting and coagulating
- ✓ Bipolar cutting and coagulating
- ✓ Vessel sealing function for a wide range of clinical applications: ovariectomy, splenectomy, urology, hysterectomy, thoracotomy and more!

Including features to add precision, performance, safety and durability:

- ✓ Automatically RF current after completion of vessel sealing
- ✓ Full set of **reusable and autoclavable** accessories
- Optional rotation kits available for connected surgeries*
- ✓ Insert for various shapes in all situations
- ✓ Smart access to programs and settings for the most common applications



High performance electro-surgery:

- ✓ 4 Cut Modes, 4 Coag Modes, 2 Bipolar Cut Modes, 4 Bipolar Coag Modes
- ✓ Bipolar Cut & Coag : Modes with independent display settings
- ✓ Up to 400 Watts (monopolar cut)
- ✓ Smart Surgical Assist : This allows smart access to programs & settings
- ✓ Unit Startup Function : Previously activated, standby, factory reset
- ✓ Time Out Function : Stops the HF output incase of prolonged activation
- ✓ 30 programmable memory location



22 rue Charles de Gaulle
22100 Lanvallay - France
Tel. +33 (0)2 96 85 86 76

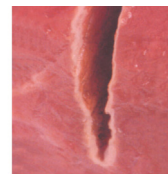
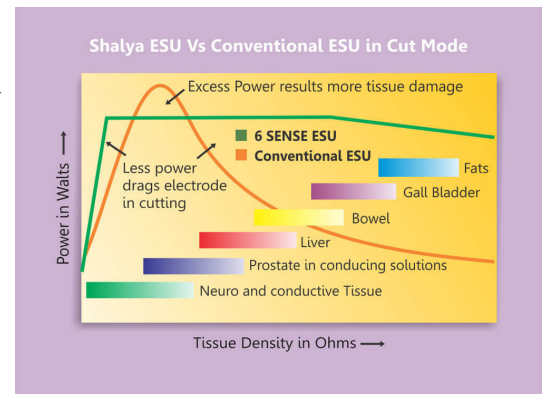
export@manomedical.com
www.manomedical.com

Unmatched surgical performance

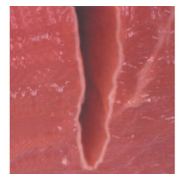
6SENSE TECHNOLOGY • MORE AND MORE SENSIBLE

This is a recent innovation in the field of advance feedback controlled Electrosurgical Technology. System maintains the set power over wider range of tissue by sensing -voltage, current, power, tissue density, patient return electrode monitoring and leakage RF current- at 2000 times per second.

- No need to adjust the power setting when tissue changes
- 50% less thermal damage than conventional ESU's
- Minimizes patient recovery time
- Reduces risk of collateral tissue damage
- Minimum RF noise other OT equipments
- Reduces risk of neuro - muscular stimulation
- Less charring and sparking due to precise & clean cutting



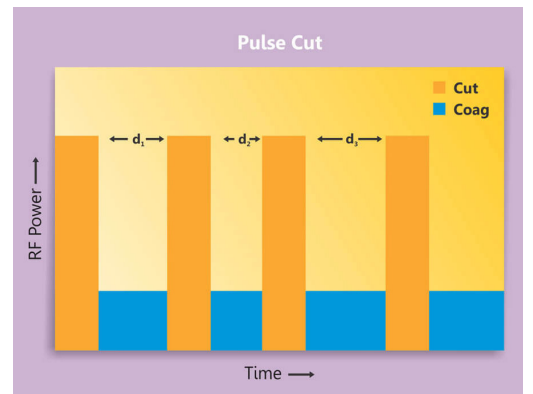
Conventional ESU
Thermal spread >0.3 mm



6 SENSE ESU
Thermal spread <0.15 mm

SMART PULSE CUT • POWER ON DEMAND FOR ENDO SURGERY

Cutting is smartly divided in cut & pause, so that coagulation occurs in each pause, ex.: for polypectomy & papillotomy by endo surgery.

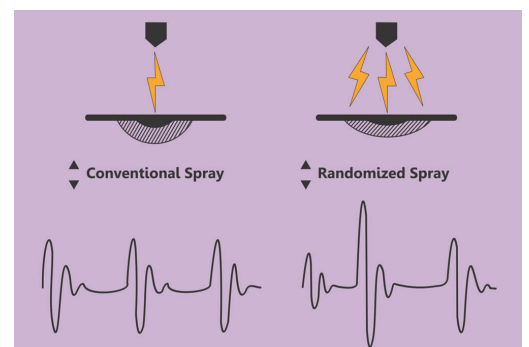


RANDOMIZED SPRAY COAG • THE REAL SPRAY COAGULATION

In conventional spray coag, beam tends to follow the same path left by previous spark resulting in non uniform coagulation over larger area. By randomizing spray frequency & amplitude, spark tends to take multiple paths covering larger area.

Advantages:

- Spark initiated from a longer distance
- Uniform & homogeneous coagulation over large surface area at lower power settings
- Less tissue necrosis & carbonization
- Increased coagulation speed
- Reduced output voltages



Seal&Cut MV1

EFFECTS MODES

ULTRA-RESPONSIVE TO TISSUE DEMANDS

► Monopolar modes:

- **4 Cut Modes** : Our 6SENSE technology achieves consistent cutting for all tissue types.

Low: precision cutting at lower voltages. Suitable for delicate cutting where adjacent tissue damage could occur (Neuro, ENT).

Pure: Clean and precisely controlled consistent cutting for all tissue types. Minimum dragging effect. Incredibly useful in instances of Transurethral Resection of the Prostate (TURP).

Blend: Consistent cutting power combined with effective coagulation thereby reducing re-bleeding for a wide variety of tissue types.

Endo: Pulsed cutting with appropriate pulse interval

• 4 Coag Modes:

Soft (Desiccate): Specifically designed for contact coagulation at lower voltages. Suitable for Neuro, ENT and Endoscopy.

Swift: Soft coagulation with larger tissue coverage.

Fulgr (Fulgurate): Best for non-contact coagulation with moderate sparking in a variety of applications such as cardiothoracic surgeries.

Spray (Randomized Spray): Non-contact coagulation for large areas with minimum chance of tissue damage and/or necrosis.

► Bipolar Modes:

• 2 Cut Modes:

Macro (Precise) : Clinical precision at lower voltages to prevent sparking and reduce adjacent tissue damage – best used for Neuro, ENT, Ophthalmic surgeries.

Smart BiCut: Smart control over consistent cutting effects in all types of tissue. Output is specifically designed for today's new generation of cutting instruments, bipolar needles, and Hooks.

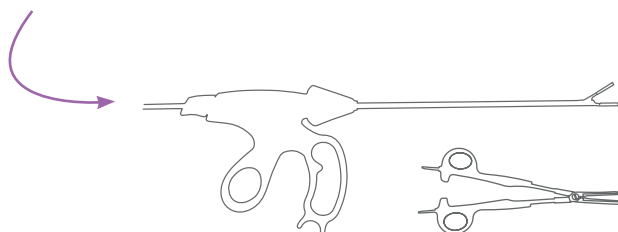
• 4 Coag Modes:

Micro (Precise): Without sparking, selected for delicate bipolar tissue desiccation.

Stndr (Standard): Standard bipolar coagulation with moderate hemostasis.

Force: Bipolar coagulation for thicker and high impedance tissue.

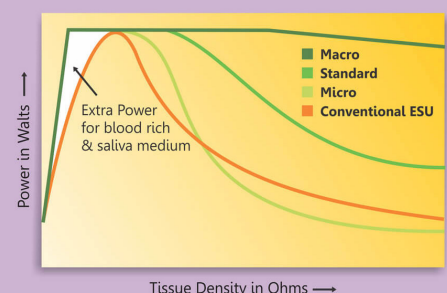
Sealer: Effective for standard vessel sealing and fusion.



COMPREHENSIVE
ELECTROSURGICAL
SOLUTION FOR
UNMATCHED
RESULTS



Shalya ESU Vs Conventional ESU in Bipolar mode



22 rue Charles de Gaulle
22100 Lanvallay - France
Tel. +33 (0)2 96 85 86 76

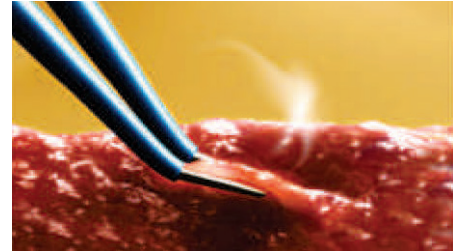
export@manomedical.com

www.manomedical.com

Advanced technological innovations

SMART BIPOLAR

BiCoag Alarm : Audio feedback upon completion of Bipolar Coag, reduces charring and sticking.



REMOTE POWER AND MODE SETTINGS

FOR USE WITHIN STERILE SURGICAL FIELDS

Surgeon can easily change power and mode settings of the electro-surgery unit using conventional hand switch on the electro-surgical pencil.



SELF DIAGNOSIS

FASTEST ERROR IDENTIFICATION & RECTIFICATION

Self-diagnostic function implemented upon turning on the unit to ensure smooth functionality for any procedure. If any error is detected, an alarm and error code is displayed to effectively locate solutions to rectify issues in its service manual.



5" TOUCH SCREEN DISPLAY

Allows users a quick, easy and interactive experience.



SMART SURGICAL ASSISTANT • USER PROGRAMMABLE AND PRESET PROGRAMS

Helps users quickly set up the system after turning on the unit.

By pressing the "Program" power setting shows the procedure's name or number. After selecting the required program, the user must simply select "Recall" just once to set the system for the selected application.



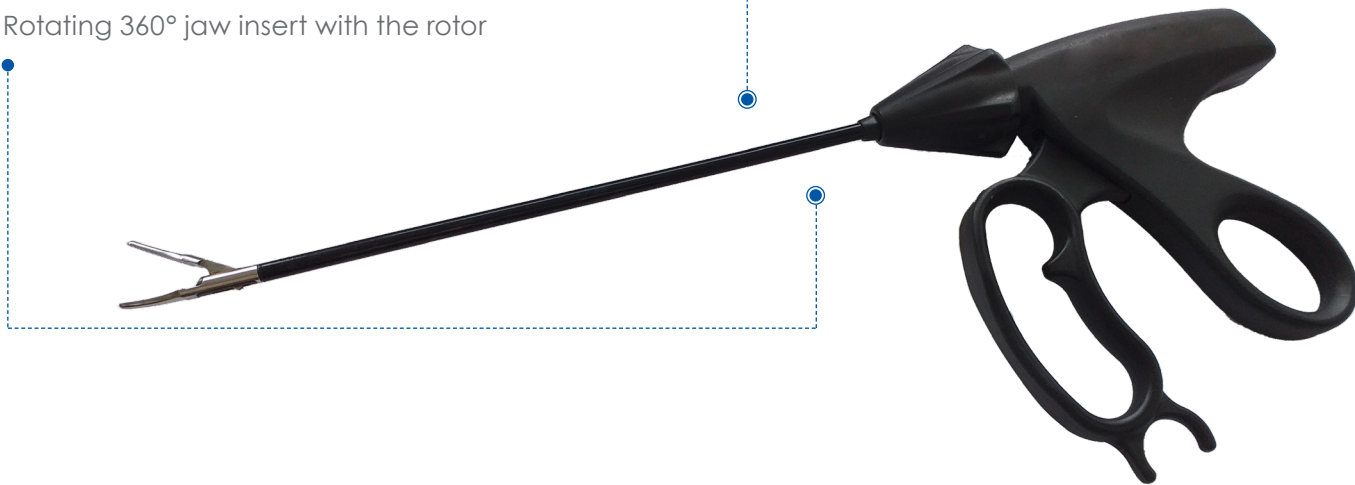
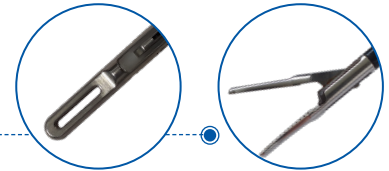
Veterinary Vessel Sealing



Instruments developed to reduce cost while optimizing surgical outcomes

LAPAROSCOPIC VESSEL SEALER

- ▶ Multiple handgrip options for greater comfort
- ▶ A fenestrated insert and a curved flat insert
- ▶ Quick lock & easy to assemble system.
- ▶ Rotating 360° jaw insert with the rotor



Sealing cycle



Ensure zone seal



Cut the tissue

VESSEL SEALER FOR OPEN SURGERY



22 rue Charles de Gaulle
22100 Lanvallay - France
Tel. +33 (0)2 96 85 86 76

export@manomedical.com

www.manomedical.com

Seal&Cut MV1



Indications in veterinarian medicine

Designed for a wide range of clinical applications, such as:

- Ovariectomy
- Splenectomy
- Urology
- Hysterectomy
- Thoracotomy
- Hepatectomy...

Seal&Cut MV1 has been developed for all kinds of open, endoscopic, laparoscopic and minimally invasive surgeries.



Add high-tech precision to your surgical expertise!

Seal&Cut senses the density of tissue held in the instrument and delivers an appropriate amount of energy to form the permanent seal.

- Dual paddle footswitch allowing to change surgery mode using central buttons
- High withstand tissue seal
- Seals artery, vein or tissue bundles up to 7 mm (thickness and width)
- Minimal thermal spread to adjacent tissue
- Reduces tissue sticking and charring
- No foreign material left behind after surgery
- Minimum cost per case due to reusable attachments
- Independent activation of bipolar cutting and coagulation

Seal&Cut MV1 includes reusable and autoclavable accessories:

- 1 neutral plate and cable
- 1 monopolar handswitch pencil
- 1 set of 5 electrodes (1 needle, 1 ball, 1 straight blade, 1 angled blade, 1 loop)
- 1 bipolar straight forcep 20 cm long, 1 mm tip and cable
- 1 vessel sealer open surgery coated instrument, 19 cm long, 3 mm thick - 24 mm jaw
- 1 dual paddle footswitch
- 1 laparoscopic instrument including:
 - 1 handle with cable
 - 2 tubes, 18 cm long, 1 with fenestrated insert and 1 with curved flat insert

Additional accessories available in option. Ask for the detailed list +33 (0)2 96 85 86 76.



Seal&Cut MV1



Max Power (Watts) according to the selected mode:

Monopolar Cut	Low	300
	Pure	400
	Blend	250
	Endo	400

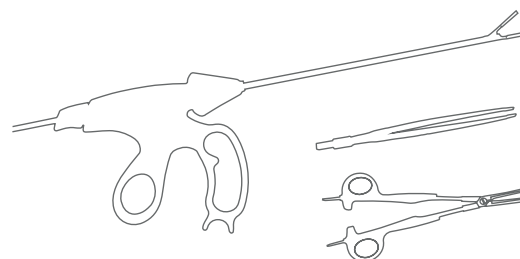
Bipolar Cut	Macro	100
	Smart BiCut	100

Monopolar Coag	Soft	150
	Swift	120
	Fulgurate	120
	Spray	120

Bipolar Coag	Micro	100
	Standard	100
	Force	100
	Sealer	100



Weight: 6 kg
Dimensions: 38 x 32 x 12 cm



22 rue Charles de Gaulle
22100 Lanvallay - France
Tel. +33 (0)2 96 85 86 76

export@manomedical.com

www.manomedical.com